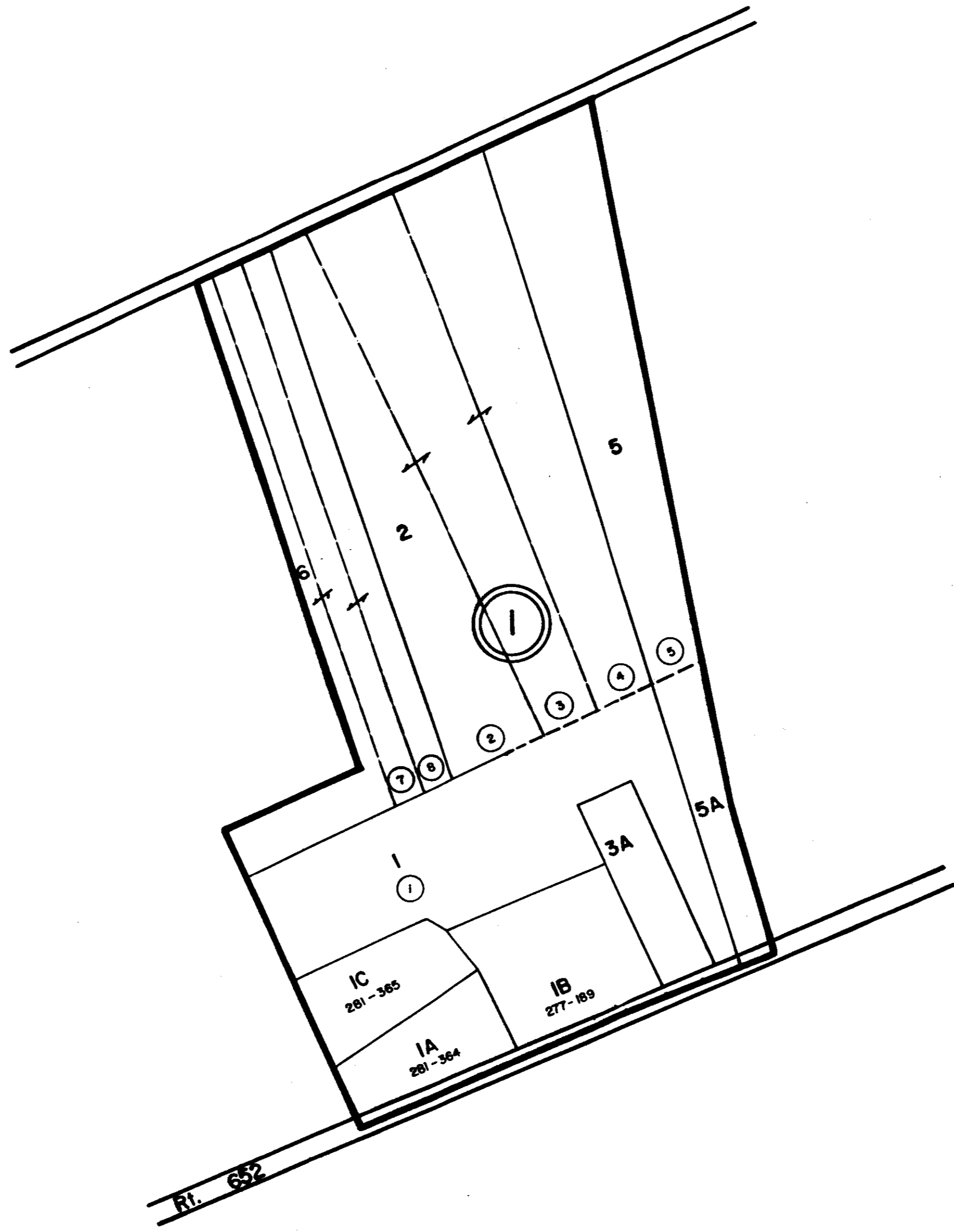


ESSEX COUNTY



① MOSES HARRIS DIVISION - P. B. 6 Pg. 118

REV. 65, 1/66, 1/82, 7/95, 12/00, 12/05  
SCALE IN FEET



RAPPAHANNOCK DISTRICT

VIRGINIA STATE DEPARTMENT OF TAXATION, DIVISION OF REAL ESTATE APPRAISAL AND MAPPING

SECTION  
INSERT 52A